

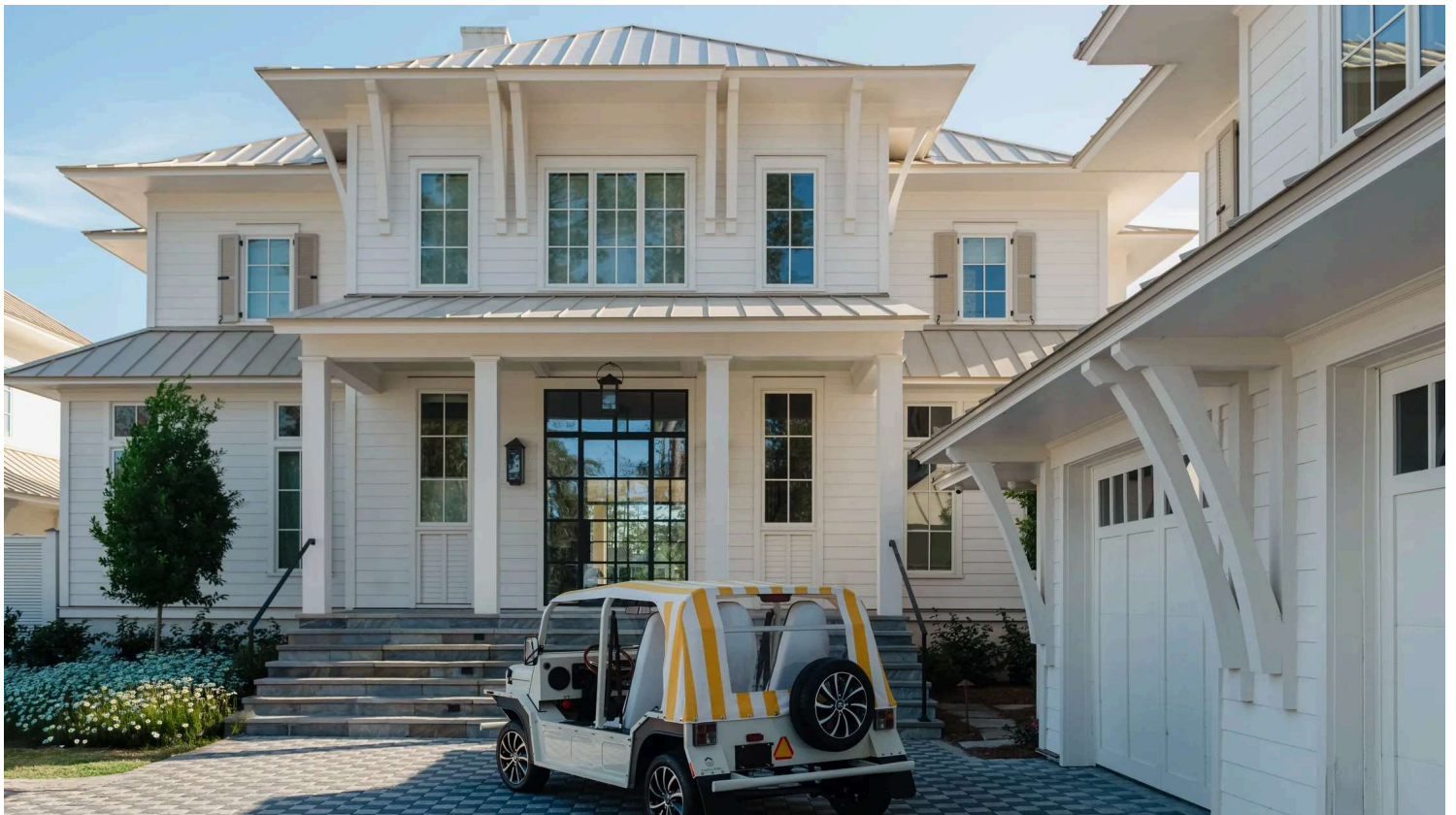
HOME TOUR

Tour a Joyful Lowcountry Getaway Where Every Detail Was Carefully Considered

Nicole Cohen brings striking tiles, classic wallpapers, and playful colors to a South Carolina project

By Morgan Goldberg, Photography by Nicole Cohen, Styled by Mariana Marcki-Matos

March 3, 2025

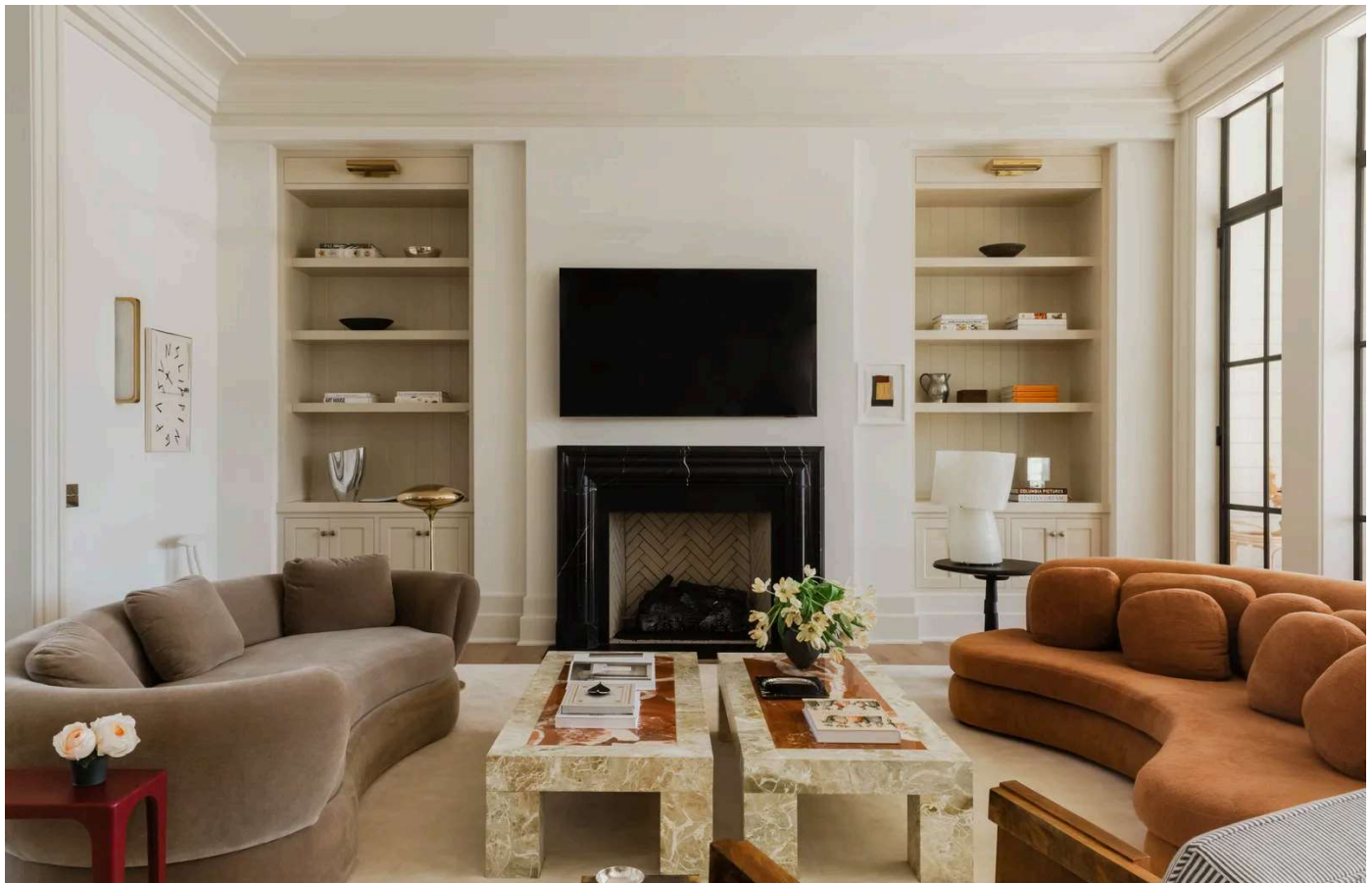




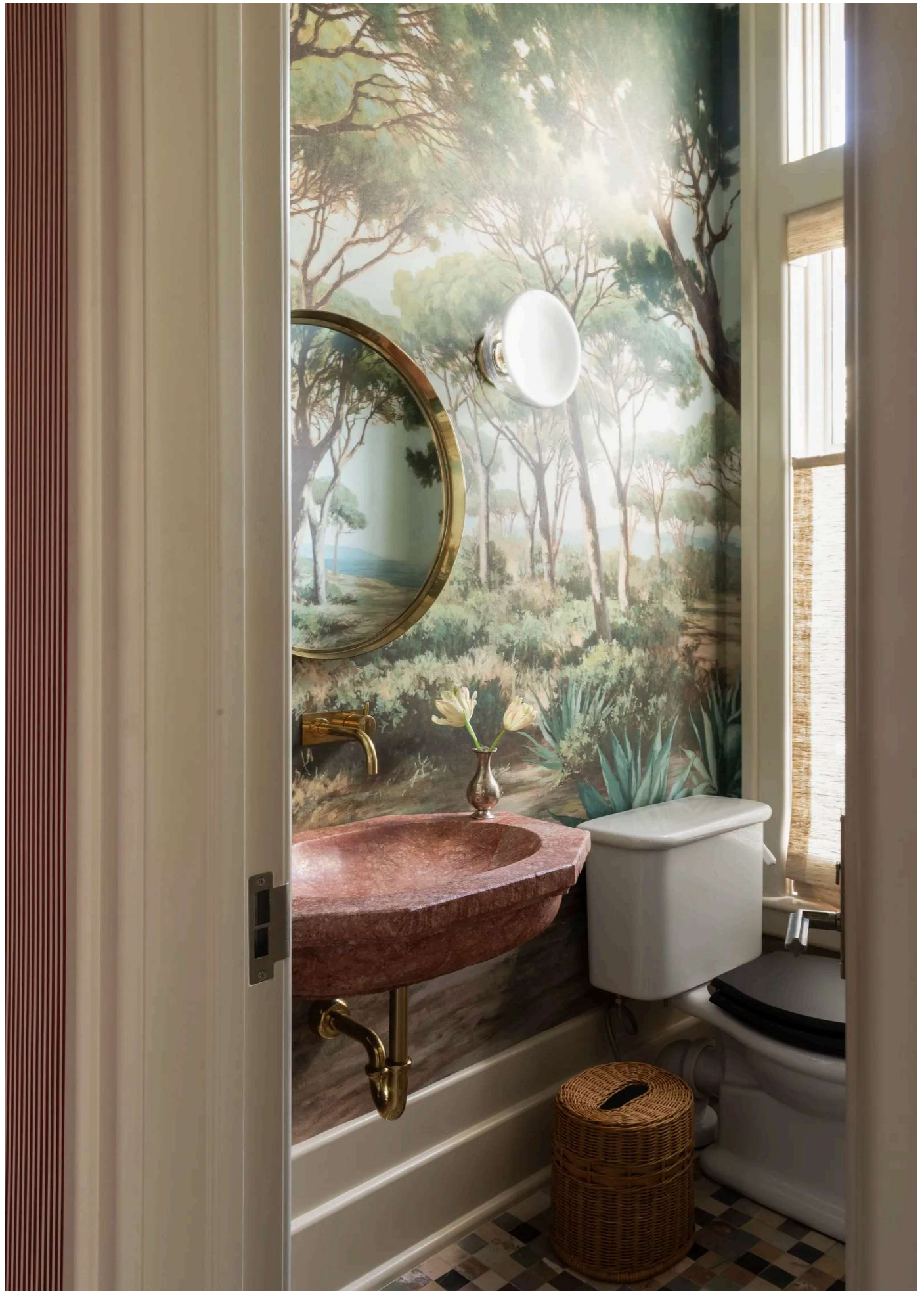
All products featured on Architectural Digest are independently selected by our editors. However, when you buy something through our retail links, we may earn an affiliate commission.

After just one vacation to South Carolina's luxury residential community Palmetto Bluff, Anna Sosa knew she wanted to build a second home there—and that she wanted Nicole Cohen to design it. “I had been following Nicole for a while on Instagram,” says the former magazine editor. “I had always said, ‘If I ever build a house, I would love to work with her.’ She puts materials together in this really different, fresh way.”

Cohen, who became an interior designer after years of blogging and photographing spaces, started by bringing an innovative approach to the exterior. “There’s a strict Lowcountry aesthetic that we had to adhere to, but we tried to make it our own,” she explains. “We have this checkerboard Techo-Bloc tile driveway that I thought was super cool and interesting.”



Cohen chose two rounded sofas to counteract the square shape of the space. “You feel like you’re being hugged when you’re in the room,” she describes. “We thought it was a little risky to do two different couches, but I think because we did such different fabrics, it worked.” The rust-colored seating is a Pierre Augustin Rose [Saint Honoré 280](#) sofa and the taupe number is a Studio Giancarlo Valle [Julio sofa](#). Art: Luke Chiswell/Tappan Collective





“The powder room started with the floor, those little two-inch marble tiles,” notes Cohen. “That wallpaper is Pierre Frey and it actually reminded me of the marsh there in Palmetto. We had the Rojo Breccia sink custom-made for us and we based it on a vintage shape.”

To determine a visual direction for the interiors, Sosa gathered images of couture clothing and vintage scenes that represent her style. “I have a specific fashion sense that I wanted to bring to life in my home,” she says. “There definitely are feminine touches, but there’s some edginess and some modern influences. That Nicole was able to take [those pictures] and create this whole story is her brilliance.”

Once the mood for the project was set, Cohen sourced a bevy of striking tiles. The foyer floor, for example, is covered in white and variegated orange terracotta bells from Clé that interlock to create a postmodern-esque squiggle pattern. It’s paired with high ceilings, a sweeping staircase, and an elegant In Common With Vera Sconce for a groovy take on the classic grand entryway.



The adjacent living room also strikes a balance between playfulness and stateliness. Cohen opted for two kidney-shaped sofas, a rust-colored Pierre Augustin Rose Saint Honoré 280 and a taupe Studio Giancarlo Valle Julio, which provide a casual whimsy. But they’re arranged traditionally, facing each other and flanking a Georgian-style Nero Bilbao marble fireplace from Chesneys. A pair of custom, veiny stone coffee tables sit in the middle. “I wanted two rectangles because both couches are very curvy,” Cohen considers. “We needed something with edges.”



Cohen specified a chunky, tiered edge for the fusion quartzite countertops on the custom oak island with burl insets. “I love the details in that kitchen, how Nicole brought in the burl wood,” Sosa effuses. “I live in the details. I appreciate those details every day.”

The open kitchen is informed by an eye-catching backsplash of ivory-and-marigold hand-painted tiles from Tabarka Studio, which Cohen mixed with an oversized plaster hood, French silver saucer pendants by Roman Williams Guild, and dark fusion quartzite countertops. “It is very durable and we love it,” she says of the composite surface. “We brought the tile to the stone yard to make sure it matched up. It has a slight little bit of yellow in it, as well.”





"It's the coolest color," Cohen says of the prep kitchen cabinetry hue. "It's sometimes green, it's sometimes neon, it's sometimes yellow." The whimsical Maude Made ceramic squares make up the backsplash.



On the screened-in porch, Casa Gusto rattan wingback chairs are upholstered in a vibrant botanical fabric by Schumacher and a classic ticking stripe by Perennials.

In the honeydew-hued prep kitchen, tiles steal the show once again. The backsplash comprises cheerful Maude Made [ceramic squares](#) with fruit, flower, and animal motifs, while the floor is a caramel-and-white honed cement checkerboard. “You want to have fun in that room because you could shut the door and you don’t have to see it,” shares Sosa. “It can get messy if you’re entertaining. That’s probably where I spend the most time. It’s really comforting and homey.”

The AD daily newsletter

Get essential design reads in your inbox every day.

SIGN UP

By signing up, you agree to our [user agreement](#) (including [class action waiver and arbitration provisions](#)), and acknowledge our [privacy policy](#).

The dining area, with its round oak [Brooks Custom](#) table and midcentury-style Artistic Frame [Bjorn armchairs](#), overlooks the lake. So does the screened-in porch, where Cohen went all-in on a coastal vibe with The Wicker Works [wicker daybeds](#), Casa Gusto [rattan wingback chairs](#), and a Patterson Flynn [geometric abaca rug](#). “I had never seen a natural fiber rug with such an intricate, amazing, stunning pattern,” Sosa raves. “You would expect to see that material, but not so sophisticated. That’s what I love about it.”



"We try to really walk the line between traditional and modern," Cohen considers. "We have elements of both in every room. For example, the moldings are a little more traditional and a lot of the furniture is edgier and cleaner."





“My grandma has that rope detail on all the doors in her house,” Cohen says of the vanity embellishment. “I just pick up these ideas from my childhood. My grandma’s incredibly chic and lives in the most amazing home, so I guess it was floating in the back of my mind.”

Sosa’s primary bedroom, which is located on the ground level per Palmetto Bluff tradition, also boasts views of the water and surrounding flora. Cohen emphasized this connection to nature with a dijon-toned woodland wallpaper from Osborne & Little, then developed a golden monochromatic look from there. She added a custom mustard wool bed, a senape velvet DISC Interiors x Lawson-Fenning Lorca chair, and a straw Multiforme Murano glass chandelier. “Anna told me a few days ago that yellow is now her favorite color,” Cohen says.





"We took the [[Pierre Frey](#)] [wallpaper](#) onto the vaulted ceiling, which gives it a very enveloped look," says Cohen. "The wallpaper people wanted to kill us, but we love it."

Upstairs, the three bedrooms follow a special formula. They each include a Pierre Frey wallpaper, a custom linen bed, long curtains, and a solid wool rug with a cream border. But the personalities and palettes of the spaces differ. Sosa's daughter's room feels sweet yet refined, thanks to a delicate floral print and a rosewood fabric. One guest room embodies a treehouse with [leaves climbing](#) up the ceiling, while the other embraces [graphic ikat](#).





"We looked at hundreds of wallpapers," Cohen admits. "We found the ones that spoke to us the most and were our dream wallpapers. They're all very classic patterns. Some of them have been around for a long time. And then we built a whole color panel for each wallpaper." The delicate floral print and rosewood fabric add a sweet touch to Sosa's daughter's room.



Sosa's daughter's bathroom combines Calacatta Rosa marble tile floors from Artistic Tile, Cinder Rose by Farrow & Ball wall paint, and custom millwork by Superior Woodcraft with Peter Fasano coral-and-cream striped linen panels.





In the citron guest room covered in a [graphic ikat](#) from Pierre Frey, a custom nightstand by [Superior Woodcraft](#) is topped with a mushroom-like Ceramicah [Glazed Tera Lamp](#).





Cohen painted one sunny en suite in Dorset Cream by Farrow & Ball, then installed a Semplice sconce from the Urban Electric with a tonal yellow shade.

Each of the bedrooms has a corresponding en suite that features beadboard walls, an oak vanity with rope detailing, and a stone countertop that extends upwards to wrap around the mirrors. “I like to repeat things because I think it gives a sense of calm when there’s continuity throughout the house,” explains Cohen. “Then you can have more fun with the other things that you want to do.”

The moody, slightly retro media room is a departure from the rest of the home, with deep brown wood paneled walls and an L-shaped Artistic Frame sectional in whiskey-hued velvet. It’s the perfect antidote to all the elaborate patterns and light colors, a place to escape and screen a movie. But it also highlights the joy Cohen conjured everywhere else, which is exactly what Sosa was seeking for her Lowcountry oasis.



“The checkerboard driveway was something that we needed to get board approval on,” Cohen shares, adding that she collaborated with architecture firm [Court Atkins Group](#) and contracting firm [Blackwater Construction](#). “I think it’s the only house that has anything like that down there. “It’s Techo-Bloc, so it’s not an uncommon paver, but it’s just the way we used it.” The interior designer also worked with [Jackson & Small Associates](#) on the landscape design.



The dark, dramatic media room is ideal for watching movies. The L-shaped [Artistic Frame sectional sofa](#) provides ample seating for viewers.





In Sosa's mauve-toned study, a custom Artistic Frame sofa is upholstered in chocolate velvet. Art: Ben Christensen/Head West Studio



“We definitely made a point of using both brass and nickel fixtures in almost every room,” says Cohen. “It gives a very layered feeling. The nickel is so clean and fun to look at. The brass adds warmth.”

More Great Stories From AD

- Not a subscriber? [Join AD](#) for print and digital access now.
- [Tour a Stylish Houseboat on the Seine](#)
- [Severance Twists the Mundane Trappings of the Office Into a Mind-Bending Hellscape](#)
- [Designers Are Saying “I Do” to the Bachelorette Aesthetic](#)
- [I Spent \\$3,600 to Furnish My Dream Nancy Meyers-Inspired Living Room—Here’s How I Used My Budget](#)
- [The Perfect, Wallet-Friendly Vintage Runner Does Exist](#)
- [New Arrivals: Editor-Approved Spring Things](#)
- [Inside a Mediterranean-Style Hollywood Hills Villa With a Clean-Cut New Look](#)
- [12 Elegant Bed Skirts That Make Frills Look Fresh](#)
- [The Best Indoor Garden System for Every Space](#)
- Sign up for our [daily newsletter](#) to get the best of design in your inbox.



[Morgan Goldberg](#) is a Brooklyn-based writer with nine years of experience in the lifestyle space. She started her editorial career at *Food & Wine* magazine before moving on to freelance. Her words have appeared in *Architectural Digest*, *Clever*, *Remodelista*, *Eater*, *Travel + Leisure*, and more. She likes pasta, green sofas, ... [Read more](#)

Writer

Explore home tour web exclusive home tour domestic home tour

The AD daily newsletter

Get essential design, architecture, and celebrity style reads, handpicked for you, every day.

SIGN UP

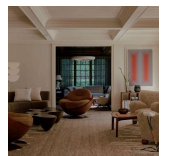
By signing up, you agree to our [user agreement](#) (including [class action waiver and arbitration provisions](#)), and acknowledge our [privacy policy](#).

READ MORE

ARCHITECTURE + DESIGN

Tour an Artful Long Island Property That Avoids Beach House Cliches

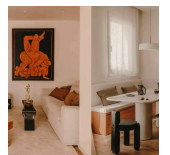
By David Foxley



ARCHITECTURE

A 753-Square-Foot Apartment in Barcelona Incorporates Californian Cool

By Noelann Bourgade



ARCHITECTURE + DESIGN

Inside a Brooklyn Brownstone With an Eclectic Mash-Up of Treasures

By Morgan Goldberg



ARCHITECTURE + DESIGN

Tour a Family's Traditional-Meets-Modern Massachusetts Home

By Vaishnavi Nayel Talawadekar



ARCHITECTURE + DESIGN

Tour a Grand Swiss Chalet With a California Attitude

By Paola Singer

ARCHITECTURE + DESIGN

Inside a 950-Square-Foot NYC Bachelor Pad That Writes Its Own Rules

By John Ortved

ARCHITECTURE + DESIGN

This 764-Square-Foot Munich Apartment Went From Prefab to Undeniably Individual

By Mailin Sophie Zieser

ARCHITECTURE + DESIGN

Beneath This Shingle-Clad Nantucket Home, a Hidden Playground Awaits

By Kristen Flanagan

ARCHITECTURE + DESIGN

Inside a Midcentury Rambler in Minneapolis With a Rosy Glow Up

By Leilani Marie Labong

ARCHITECTURE + DESIGN

Inside Chanel Iman and Davon Godchaux's Slice of South Florida Paradise

By Charlotte Collins

ARCHITECTURE + DESIGN

Tour a Family's Historic Chevy Chase Home With a Colorful Redesign

By Katherine McGrath

CELEBRITY HOMES

Pop Star Anitta Welcomes AD Into Her Rio de Janeiro Home

By Loredana Matute

